

# Initial Settings

Before using FlashAir™, be sure to change the password (security key) in one of the following ways. If you fail to do so, your files (e.g. photos) may be stolen or hacked by a third party.

If you make the initial settings of the FlashAir in way of “1. Setting up the FlashAir using a Wi-Fi device” and you use a smartphone or a tablet, the device will be registered as the administrator device in the FlashAir. You can change the network settings or start Photoshare on the FlashAir using the administrator device.

If you make the initial settings of FlashAir in way of “2. Setting up the FlashAir using FlashAir Configuration Software” or using web browser on your PC, no device will be registered as the administrator device in the FlashAir.

If you want to change the network settings or to start Photoshare on your FlashAir from a smartphone or a tablet other than the administrator device, you can register the device as an administrator device of the FlashAir by entering the “MASTERCODE” on the FlashAir App for Android™ or iOS in one of the following ways. (In most cases, you will only have to enter the MASTERCODE once for each device.)

- You can change the MASTERCODE on the FlashAir App using the administrator device of the FlashAir. Open “FlashAir App” > “Settings” > “FlashAir Settings” > “Advanced setting” > “Change MASTERCODE” and change the “MASTERCODE” to any code (12 alphanumeric characters). And then start to change the network settings or Photoshare on the FlashAir App in the device you want to use. If you are prompted to enter “MASTERCODE”, enter the changed “MASTERCODE”.
- Insert the FlashAir into a PC. Open “FlashAir Configuration Software” > “Initialize the card/change settings.” and confirm the “MASTERCODE” (or change the “MASTERCODE” to any code (12 alphanumeric characters)). And then start to change the network settings or Photoshare on the FlashAir App in the device you want to use. If you are prompted to enter “MASTERCODE”, enter the confirmed (or changed) “MASTERCODE”.

\*Note: After changing the “MASTERCODE”, it will not be available to change the network settings of the FlashAir through web browser.

Changing the settings of FlashAir on FlashAir Configuration Software is available on a PC other than the PC used to make the initial settings.

# 1. Setting up the FlashAir using a Wi-Fi device

To make the initial settings using an Android device or an iOS device, install and use the FlashAir App for Android or iOS. If the FlashAir App do not work well on your Android / iOS device or if you want to use another type of Wi-Fi device, make the initial settings in your web browser.

## 1-1. Setting up the FlashAir using FlashAir App for Android

### Step 1

Install the FlashAir App for Android. You can find it by searching “FlashAir” on Google play™.



### Step 2

Insert the FlashAir into a device (e.g. digital still camera) which is compatible with the card capacity and the card type. Turn on the device.



- Within 5 minutes after turning on the device, complete Step3 and Step4. Without any connection from a Wi-Fi device within 5 minutes, wireless LAN functionality of the FlashAir automatically turns off. If the wireless LAN functionality turns off, turn on the device in which the FlashAir is inserted, and then turn on the device again.
- When the device in which the FlashAir is inserted is turned off, the wireless LAN functionality of the FlashAir also turns off. Extend the automatic power off time of the device to the longest period possible before doing initial settings.

### Step 3

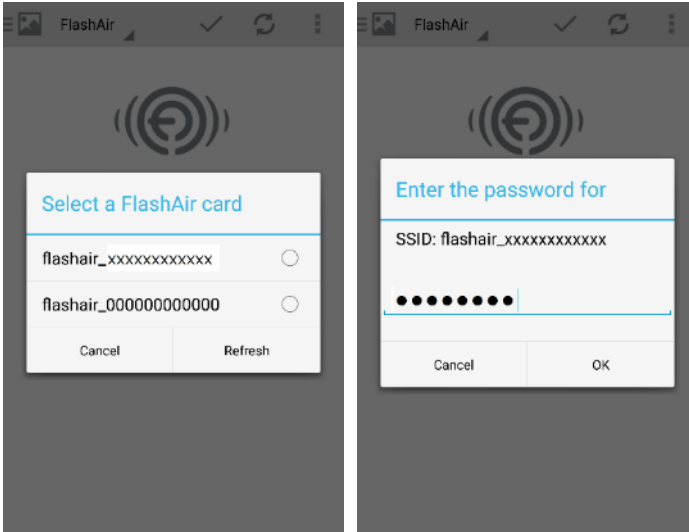
Tap the app icon to open the app.



### Step 4

The app connects to the FlashAir automatically. If there are some FlashAir around your Android device, the list of FlashAir will be displayed. Select your FlashAir.

When the following screen is displayed, enter the default password "12345678" and tap "OK".

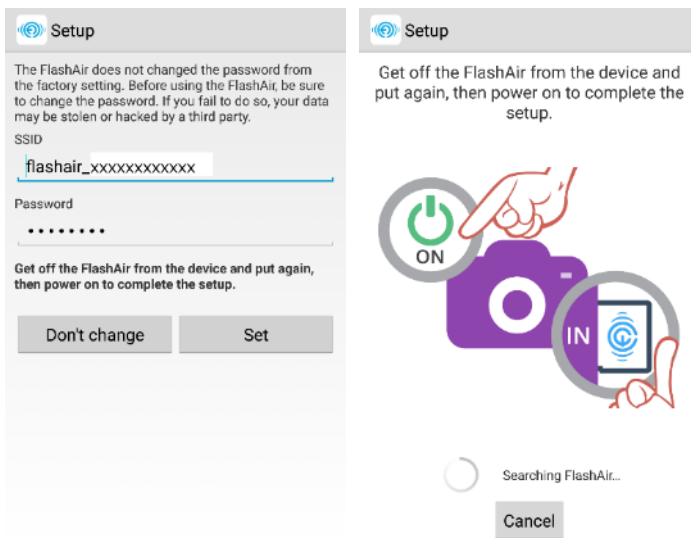


### Step 5

When the Setup screen appears, enter the network name you want to see in the list of networks into the SSID field and the new password of the FlashAir into the Password field. The SSID can be up to 32 alphanumeric characters. Choose a password between 8 and 63 alphanumeric characters. Note that alphabetical characters are case-sensitive. Do not use a password that could be easily guessed by somebody else, or a very simple password. We recommend you

make a note of your SSID and password.

Tap "Set". The right screen in the following figures will be displayed. Then remove the FlashAir from the device and insert it again. After that, turn on the device again.



After reboot, the app connects to the FlashAir again automatically. This completes your initial settings.

## 1-2. Setting up the FlashAir using FlashAir App for iOS

### Step 1

Install the FlashAir App for iOS. You can find it by searching "FlashAir" on App Store.



### Step 2

Insert the FlashAir into a device (e.g. digital still camera) which is compatible with the card capacity and the card type. Turn on the device.



- Within 5 minutes after turning on the device, complete Step3 and Step4. Without any connection from a Wi-Fi device within 5 minutes, wireless LAN functionality of the FlashAir automatically turns off. If the wireless LAN functionality turns off, turn on the device in which the FlashAir is inserted, and then turn on the device again.
- When the device in which the FlashAir is inserted is turned off, the wireless LAN functionality of the FlashAir also turns off. Extend the automatic power off time of the device to the longest period possible before doing initial settings.

### Step 3

Activate the Wi-Fi feature of your iOS device. When the device searches for available wireless LAN networks, “flashair\_xxxxxxxxxx (twelve alphanumeric characters)” should appear.



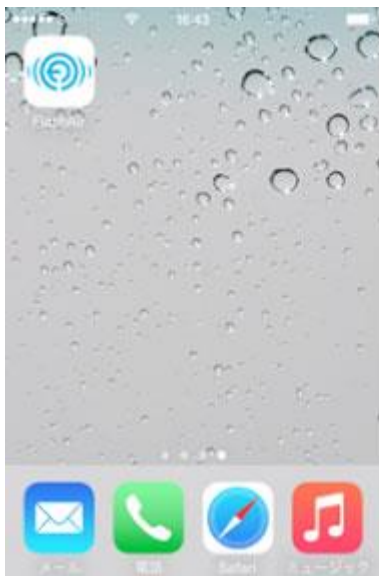
### Step 4

Select “flashair\_xxxxxxxxxx”. Enter the default password “12345678” for the network and tap “Join”. And your iOS device can connect to the FlashAir.



### Step 5

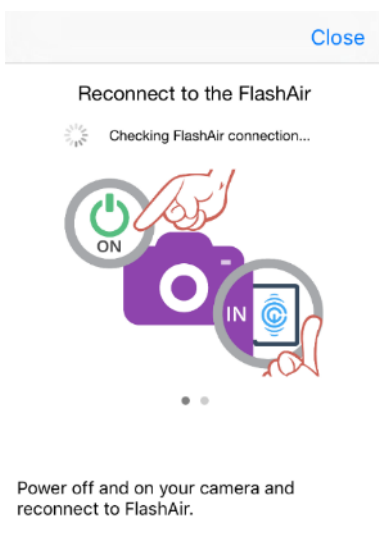
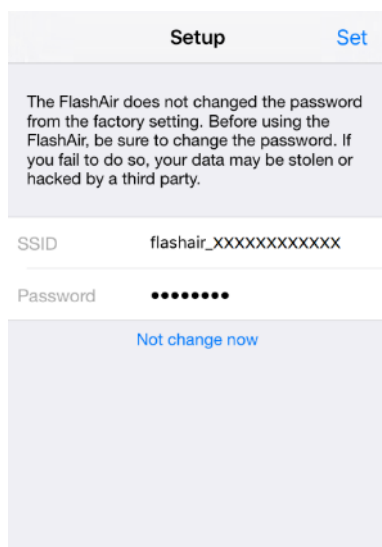
After the connection between your iOS device and FlashAir is established, tap the app icon to open the app.



### Step 6

When the Setup screen appears, enter the network name you want to see in the list of networks into the SSID field and the new password of the FlashAir into the Password field. The SSID can be up to 32 alphanumeric characters. Choose a password between 8 and 63 alphanumeric characters. Note that alphabetical characters are case-sensitive. Do not use a password that could be easily guessed by somebody else, or a very simple password. We recommend you make a note of your SSID and password.

Tap "Set". The right screen in the following figures will be displayed. Then remove the FlashAir from the device and insert it again. After that, turn on the device again.



After reboot, connect to the FlashAir again by selecting changed SSID in the same way to Step 3. Enter the changed password for your FlashAir and tap "OK", if required.

This completes your initial settings.

## 1-3. Setting up the FlashAir using Web browser

### Step 1

Insert the FlashAir into a device (e.g. digital still camera) which is compatible with the card capacity and the card type. Turn on the device.



- Within 5 minutes after turning on the device, complete Step2 and Step3. Without any connection from a Wi-Fi device within 5 minutes, wireless LAN functionality of the FlashAir automatically turns off. If the wireless LAN functionality turns off, turn on the device in which the FlashAir is inserted, and then turn on the device again.
- When the device in which the FlashAir is inserted is turned off, the wireless LAN functionality of the FlashAir also turns off. Extend the automatic power off time of the device to the longest period possible before doing initial settings.

## Step 2

Activate the Wi-Fi feature of your Wi-Fi device. When the device searches for available wireless LAN networks, “flashair\_xxxxxxxxxx (twelve alphanumeric characters)” should appear.



## Step 3

Select “flashair\_xxxxxxxxxx”. Enter the default password “12345678” for the network to connect to the FlashAir.



## Step 4

Open the browser of the device and go to: <http://flashair/>  
FlashAir W-02, W-03 and W-04 will go there automatically. If it does not go there automatically, tap/click the refresh button of the browser. The screen may not refresh even if you tap/click the refresh button. If this happens, type the above address into the address bar to go there.



## Step 5

Tap/click the arrow button or the START button and go to the next page.



(For FlashAir Class6)



(For FlashAir W-02, W-03 and W-04)

## Step 6

When the Network settings screen appears, enter the network name you want to see in the list of networks into the SSID field and the new password of the FlashAir into the Password field. The SSID can be up to 32 alphanumeric characters. Choose a password between 8 and 63 alphanumeric characters. Note that alphabetical characters are case-sensitive. Do not use a password that could be easily guessed by somebody else, or a very simple password. We recommend you make a note of your SSID and password.

Tap/click the arrow button or the OK button.



(For FlashAir Class6)

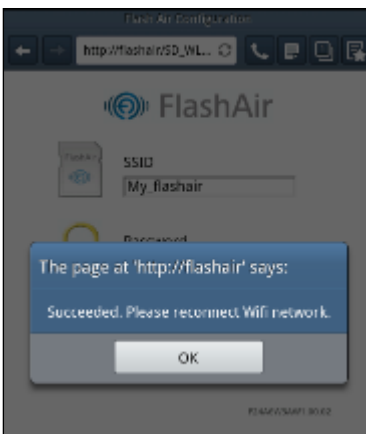


(For FlashAir W-02, W-03 and W-04)

When the following message appears, tap/click "OK".



When the following message appears, tap/click "OK".



Then remove the FlashAir from the device and insert it again. After that, turn on the device again. After reboot, connect to the FlashAir again by selecting changed SSID in the same way to Step 2. Enter the changed password for your FlashAir and tap "OK", if required.

This completes your initial settings.

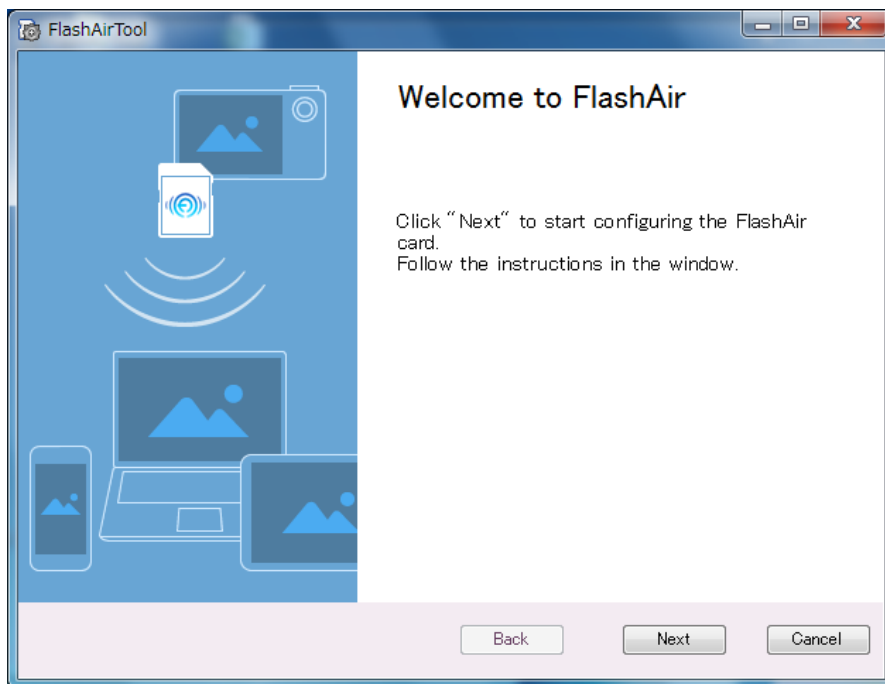
## 2. Setting up the FlashAir using FlashAir Configuration Software

### Step 1

Install the latest FlashAir configuration software for Windows® or Mac from our website.

## Step 2

Double-click the icon to start the FlashAir configuration software. After the software starts, it moves to the “Welcome to FlashAir” screen automatically. Click “Next”.



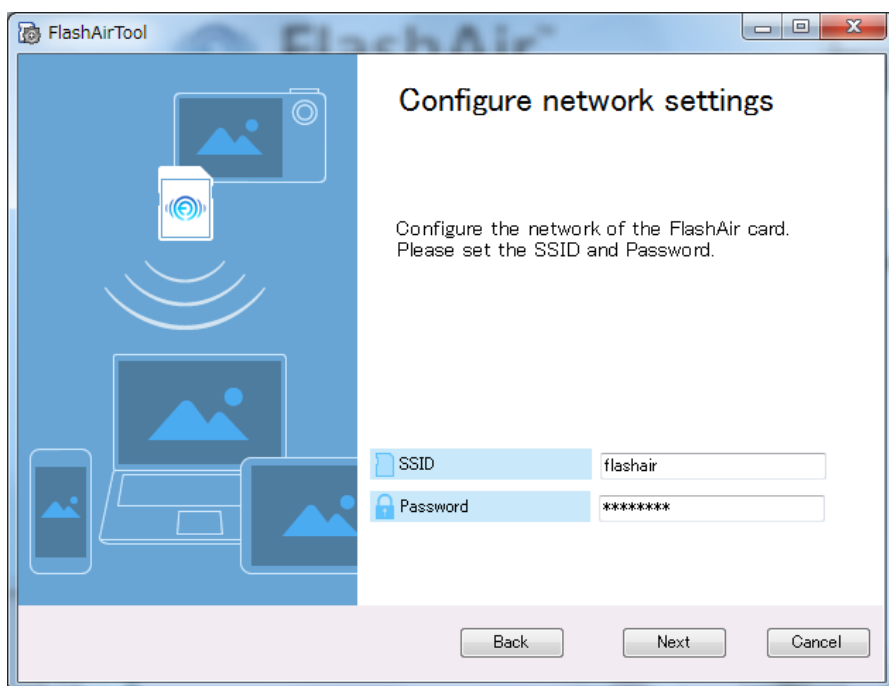
If it doesn't move there, click “Network Settings” on the main menu.



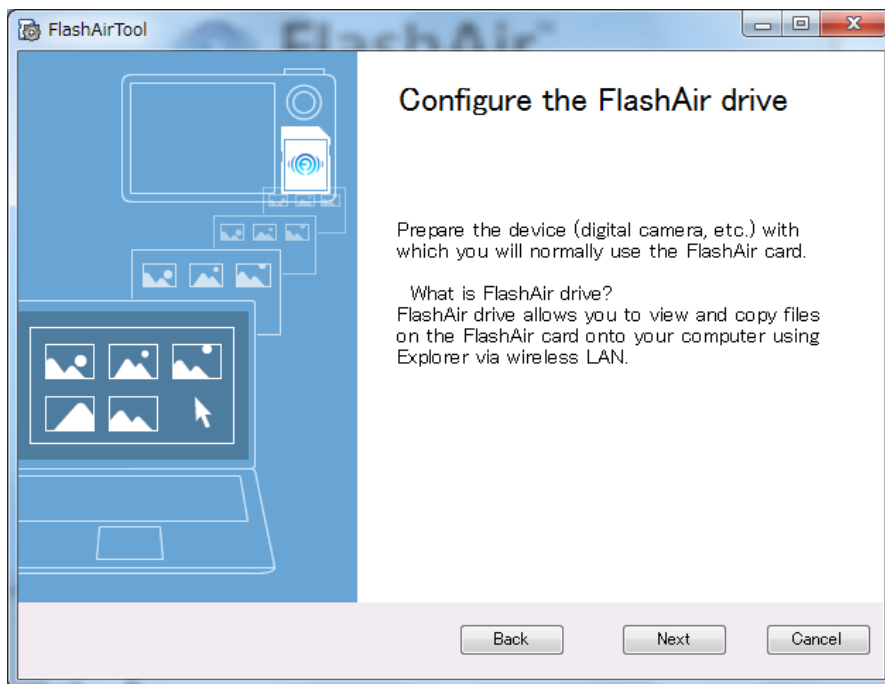
### Step 3

When the following screen appears, enter the network name you want to see in the list of networks into the SSID field and the new password of the FlashAir into the Password field. The SSID can be up to 32 alphanumeric characters. Choose a password between 8 and 63 alphanumeric characters. Note that alphabetical characters are case-sensitive. Do not use a password that could be easily guessed by somebody else, or a very simple password. We recommend you make a note of your SSID and password.

Tap "Next".



For FlashAir W-03 or FlashAir W-04 users: Then the screen of FlashAir drive (WebDAV) settings will be displayed. Continue your FlashAir drive (WebDAV) settings while referring to the manual for FlashAir drive (WebDAV).



For FlashAir W-02 or earlier model users: This completes your initial settings.

